

Capsule Checkweigher



Industry-leading weighing performance enhances both production and research & development efforts.

Industry's highest weighing accuracy
+/- 0.5 mg

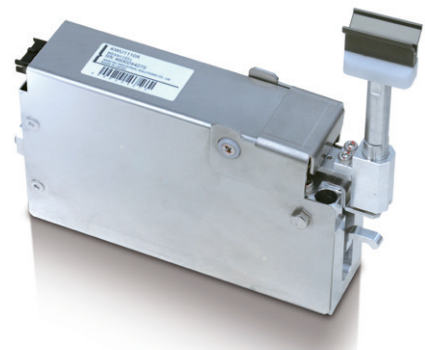
Maximum processing speed
230,000
capsules/hour



Best weighing solution for capsules containing active pharmaceutical ingredients.

Slight variances in active pharmaceutical ingredients can have a large impact on a drug's efficacy.

Anritsu's force balance weighing technology provides the industry's highest weight accuracy of +/- 0.5 mg, meeting even the most stringent standards for capsules containing high potency active pharmaceutical ingredients.



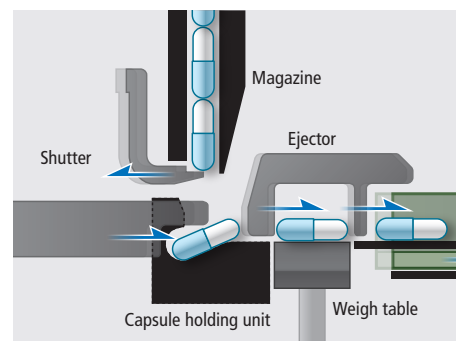
Force Balance Load Cell

For over 50 years, Anritsu has proudly developed and manufactured load cells in-house. Our advanced force balance load cell achieves ultra-precise weighing all while maintaining a compact size well suited for pharmaceutical applications.

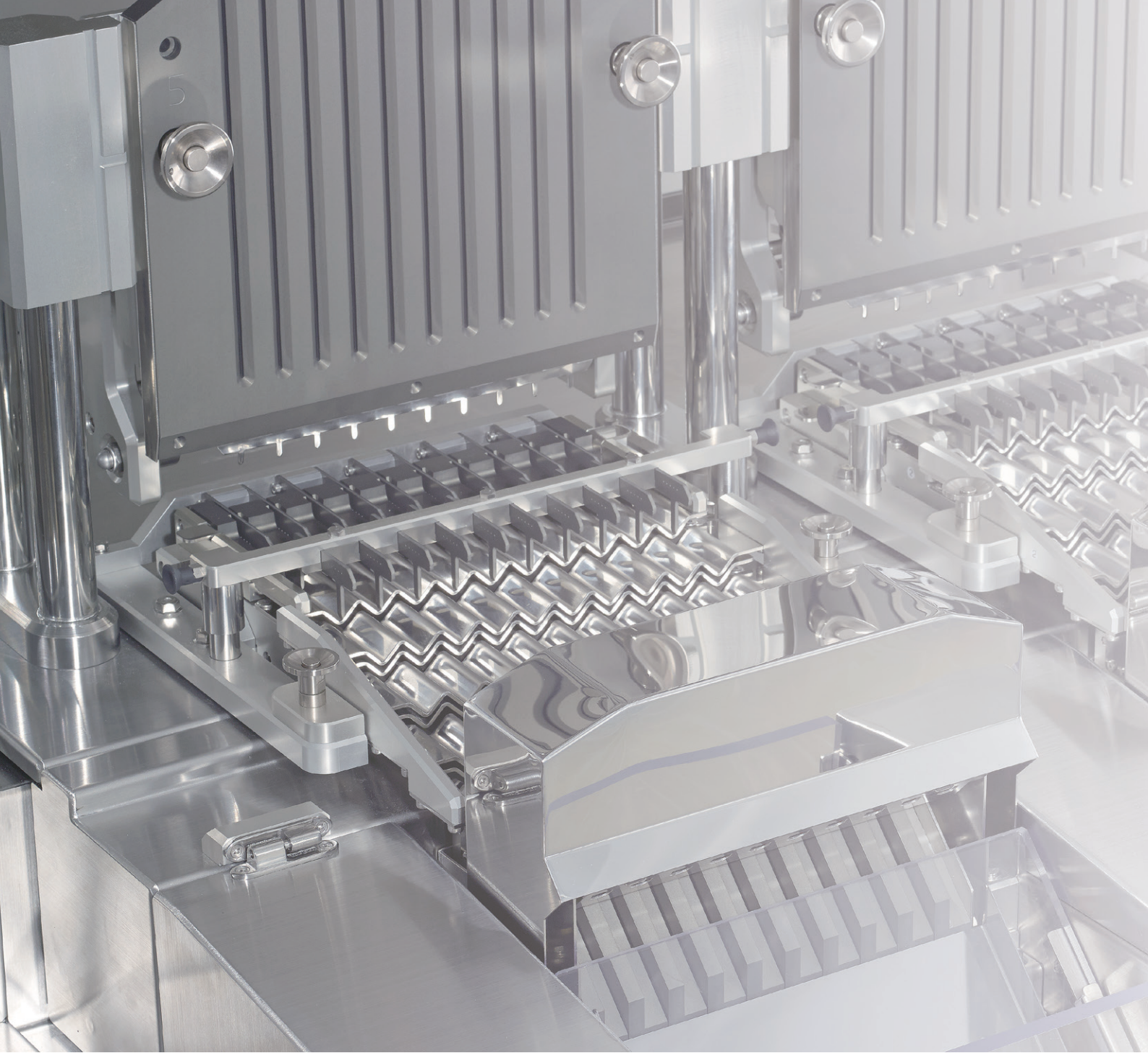


Stable and reliable feeding of pre-locked capsules - Achieved!

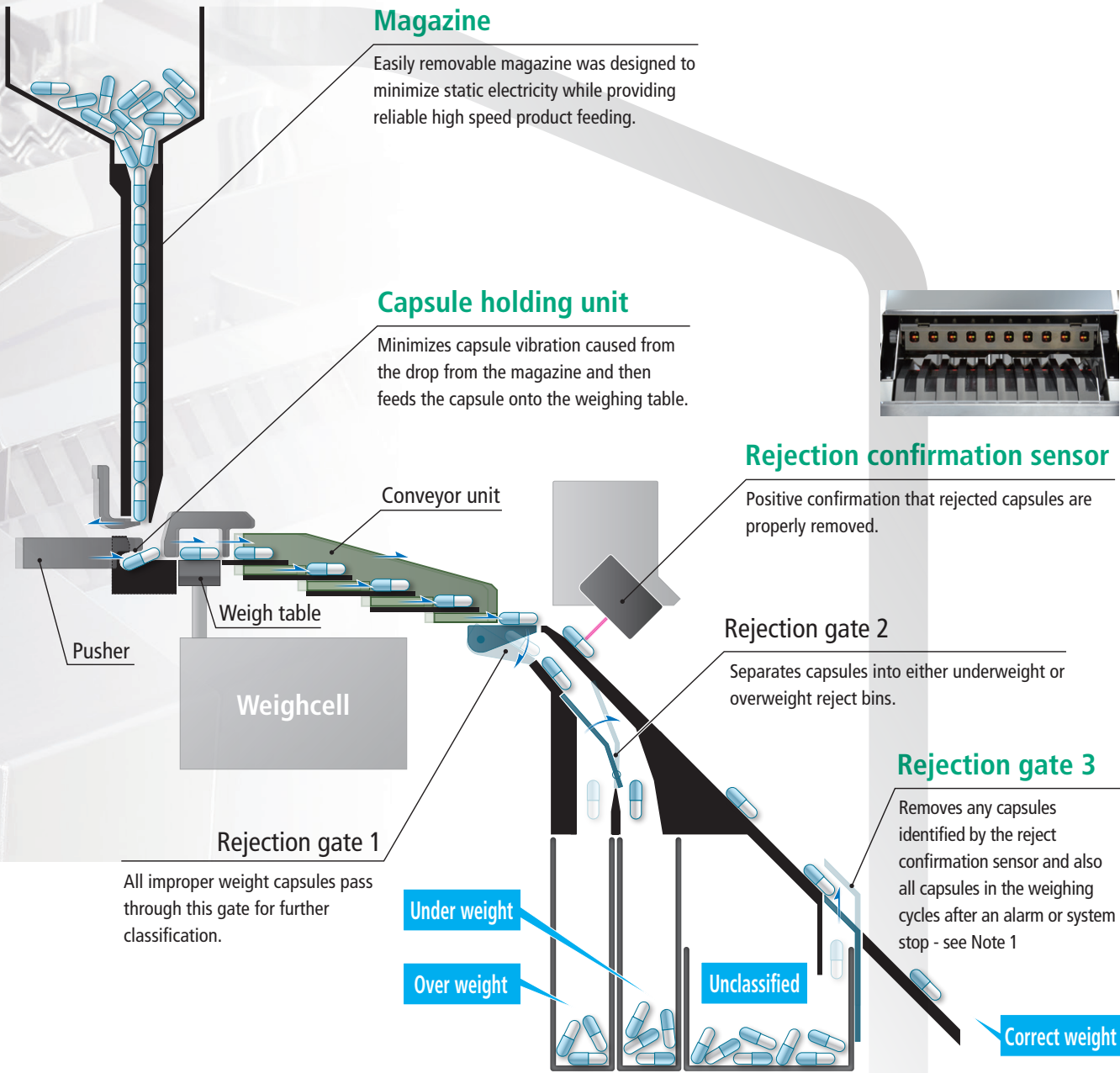
Our unique capsule handling technology eliminates empty capsules from bouncing and provides stable feeding throughout the inspection process. Minimizing product vibration is critical for high accuracy weighing. Accurately weighing empty capsules can also improve the reliability of clinical trials and new drug testing.



Capsules in the magazine are fed by the shutter individually. The capsule holding unit minimizes any vibration generated from the impact of the drop from the magazine. The capsule is then fed onto the weigh table.



**Every capsule in the system is monitored and tracked.
Three rejection gates remove all defective products.**



Note 1: After an alarm or system stop, capsules remaining in the weigh table and conveyor are forcibly discharged at the time of resuming system operation.

High precision weighing - made easy.

At a glance complete line monitoring.

Large touch panel and user-friendly display offer simplified operation.

Complete line status displayed on a single screen.

Large, intuitive touch screen GUI provides fast evaluation of production trends.

Displays histograms and trending information as well as underweight and overweight counts for each line, up to 10 lines at a time.



Designed within simplicity and safety in mind.

Tool-free parts removal

Tool-less changeover parts for capsules sizes 000 to 5.

Preventing changeover part errors

An alarm will alert the operator if a wrong or mismatched part is installed on the system.

Protection of weighcells

Overload protection mechanism protects the load cell from accidental overload during magazine changeover.

Quick and easy sensitivity confirmation

It only takes 30 seconds for the built-in weight check to verify weigh cell sensitivity. Time, effort and risk of making an error are greatly reduced compared to traditional verification procedures. Each weigh cell can be individually calibrated with the built-in weights.

Data security

Anritsu capsule checkweighers comply with FDA 21 CFR Part 11 standard for electronic records data compliance.



Changeover of magazine

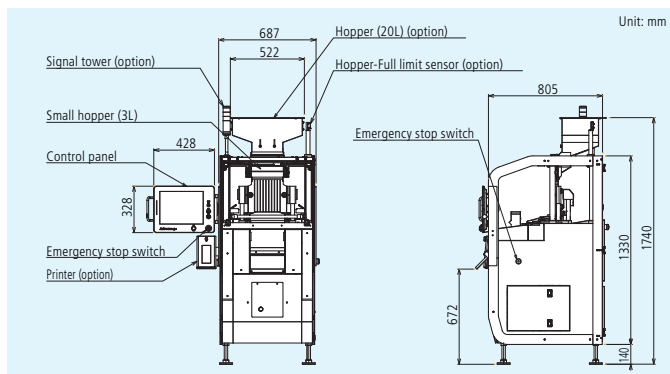


There are two built-in verification weights available, 500 and 2,000 mg. The weight closest to the capsules in upper and lower limit weight values should be used for proper calibration.

External Dimensions

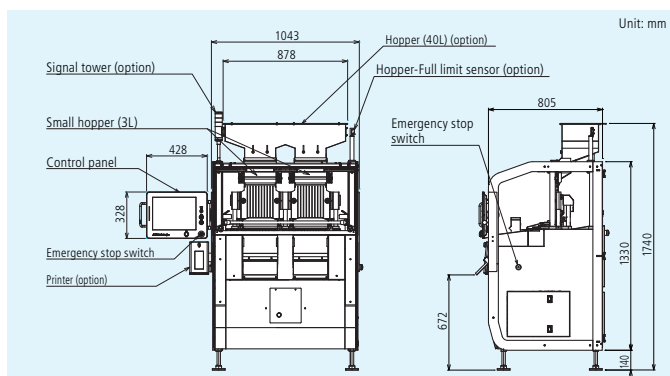
KWS9001AP10 (10 lanes)

Maximum throughput: 75,000 capsules/hour



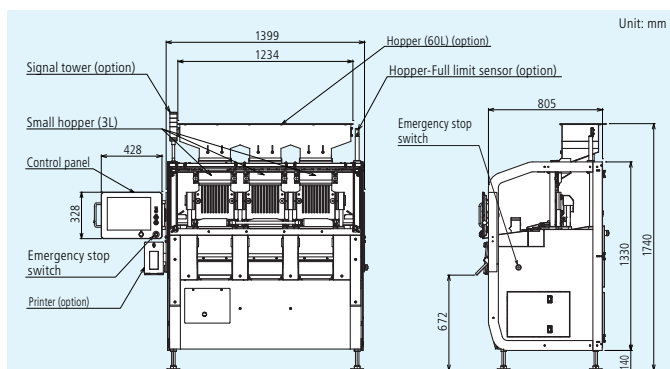
KWS9001AP20 (20 lanes)

Maximum throughput: 150,000 capsules/hour



KWS9001AP30 (30 lanes)

Maximum throughput: 230,000 capsules/hour



Specifications

Model	KWS9001AP10	KWS9001AP20	KWS9001AP30
Weighing range	2mg to 2000mg		
Scale interval	0.1mg		
Maximum throughput ¹	75,000 capsules/hour	150,000 capsules/hour	230,000 capsules/hour
Lane	10 lanes	20 lanes	30 lanes
Maximum accuracy ¹	+/- 0.5 mg		
Display	15-inch color LCD		
Operation method	Touch panel + Key (Start, Stop, and Home are direct push buttons)		
Indication range	2045.0mg		
Preset memory	Maximum 50		
Classification ²	4 ways (overweight/correct weight/underweight/unclassified)		
Product size	Capsule No. 000 to 5		
Power requirements ³	100 to 115 Vac +10% -15%, single phase, 50/60 Hz, rush current 74A (typ) (90 ms or less)		
Power consumption	550VA	1200VA	1800VA
Air requirements	0.3 to 0.9 Mpa, Air supply port: nylon tube of ø8mm		
Mass	350kg	500kg	700kg
Environmental conditions	15 to 30 °C (variation not to exceed 1°C/h to maintain accuracy), relative humidity 30% to 70% (non-condensing)		
Protection class	IP30 (IP50 for weighcell)		
Exterior	Stainless steel (SUS304)		
Data output	USB port (USB 2.0)		

1: Maximum throughput and maximum accuracy may vary depending on capsule size, filling content and quantity.

2: A rejection gate is installed per 10 lanes.

3: 120 Vac, 200 to 240 Vac are available as an option.

Note: The noise level of the checkweigher is 78dB(A) or less.



ANRITSU INFIVIS INC. <http://www.detectionperfection.com>

1001 Cambridge Drive Elk Grove Village, IL 60007-2453
Phone (847) 419-XRAY (9729) Fax (847) 537-8266

© ANRITSU INFIVIS CO., LTD. 2016
ISO14001 CERTIFICATE No.JQA-EM0210
ISO 9001 CERTIFICATE No.JQA-0316



- Some products shown in this catalog may not be available in your country or region. Contact our sales representatives for details.
- To ensure proper operation, read the Operation Manual before using the machine.
- In addition to daily inspection, a full maintenance inspection should be completed annually.

Specifications are subject to change without notice.
No part of this catalog may be reproduced without our permission.